



# TREE MANAGEMENT PROJECT:

OPENING PRESENTATION

2 NOVEMBER 2017

# FAA EXPECTATIONS



Federal Aviation Administration

## MEMORANDUM

Date: August 18, 2015  
To: Regional Airports Division Managers  
610 Branch Managers  
620 Branch Managers  
Airports District Office Managers  
From:  Director, Office of Airport Safety and Standards (AAS-1)  
 Director, Office of Airport Planning and Programming (APP-1)  
 Director, Office of Airport Compliance (ACO-1)  
Subject: **Reminder of Responsibilities for FAA Personnel and Airport Sponsors for Protecting Approach and Departure Surfaces**

### Introduction

The purpose of this memo is primarily to remind FAA Office of Airports staff about their responsibilities (as well as the responsibilities of airport sponsors) in establishing and maintaining clear approach and departure surfaces at airports. We encourage personnel in all Regions and ADOs to relay this memorandum to all Federally obligated airports and any that are certificated under 14 CFR part 139, as well as all state aeronautical agencies. This memorandum will also be available on the FAA's public website under Safety, Planning and Compliance.

The airport sponsor is ultimately responsible for ensuring clear runway approach and departure surfaces. However, ARP plays an important role in this process. This role is detailed in a separate section below.

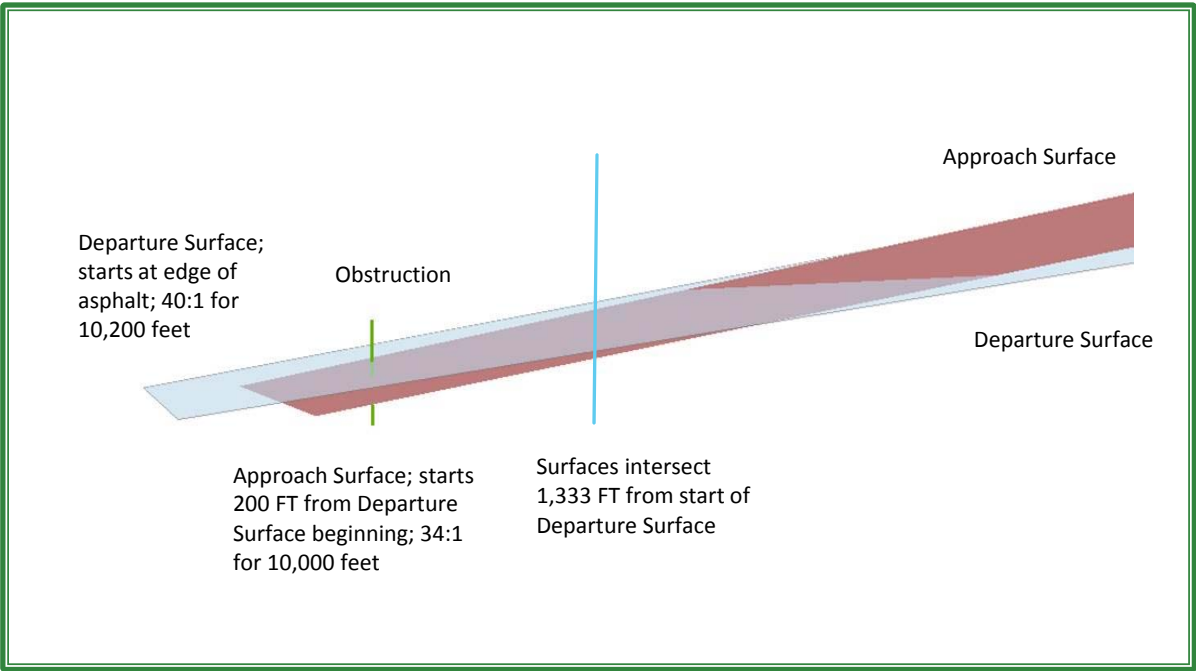
The approach and departure surfaces required to be maintained are those identified by Advisory Circular (AC) 150/5300-13A, Airport Design and FAA Order 8260.3B, The United States Standard for Terminal Instruments Procedures (TERPS). The focus of this document is on the TERPS 20:1 surface. While Part 77 civil airport imaginary surfaces are important, they are not the surfaces discussed in this document as they do not directly affect procedures.

### Role of the Office of Airports (ARP)

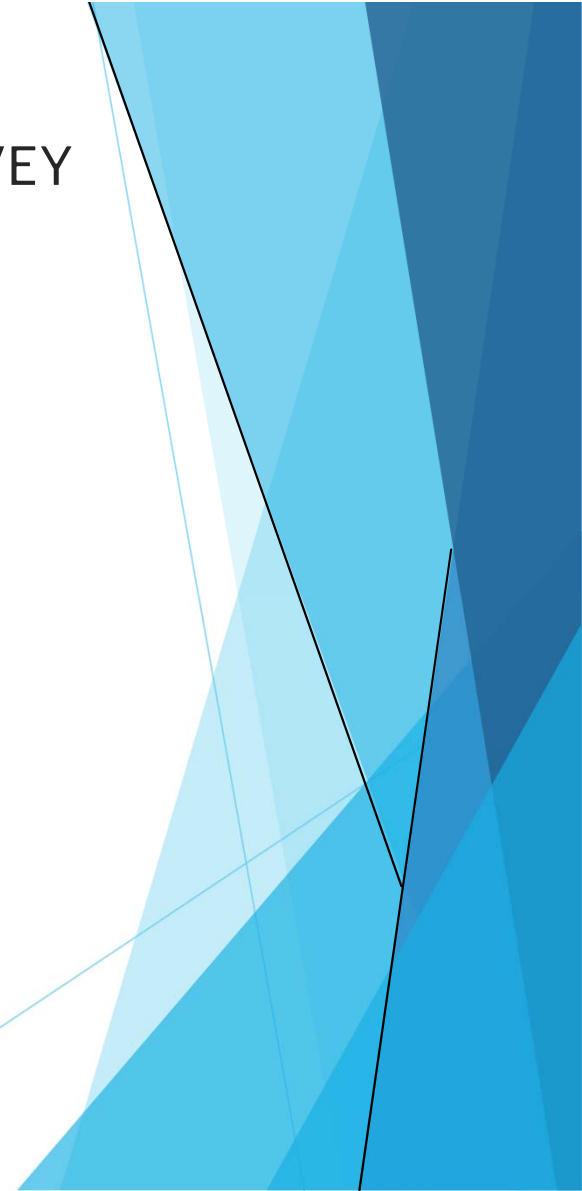
- A core part of ARP's mission is to help maintain and enhance the safety, capacity

The purpose of this memo is primarily to remind FAA Office of Airports staff about their responsibilities (*as well as the responsibilities of airport sponsors*) in establishing and maintaining clear approach and departure surfaces at airports. We encourage personnel in all Regions and ADOs to relay this memorandum to all Federally obligated airports and any that are certificated under 14 CFR part 139, as well as all state aeronautical agencies. This memorandum will also be available on the FAA's public website under Safety, Planning and Compliance.

# Imaginary Surface Start Points

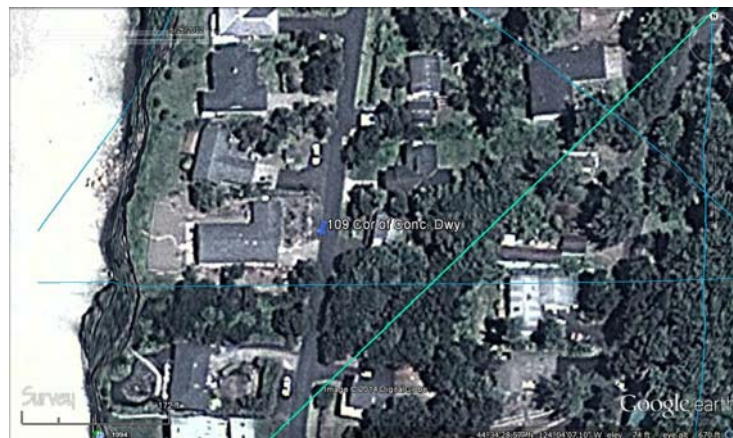
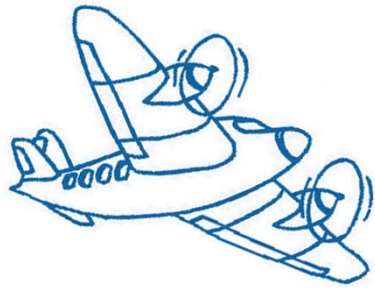


# AIRPORT GEOGRAPHICAL INFORMATION SYSTEM SURVEY

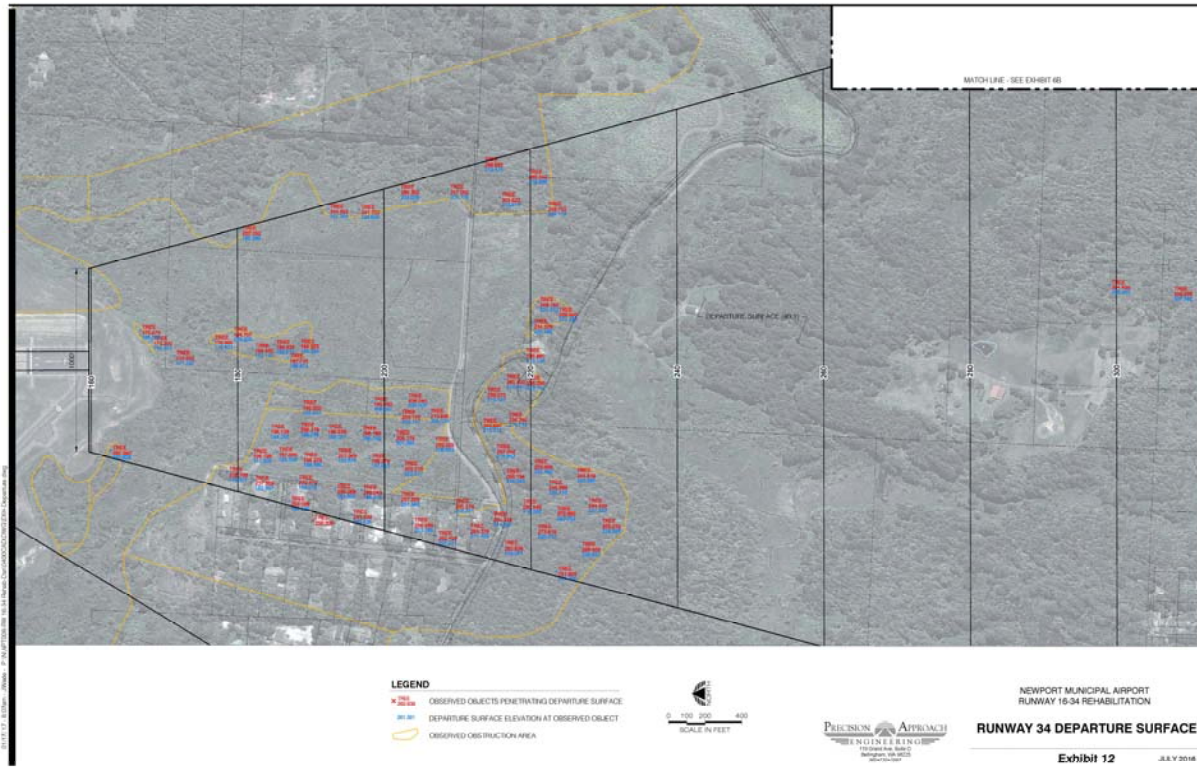
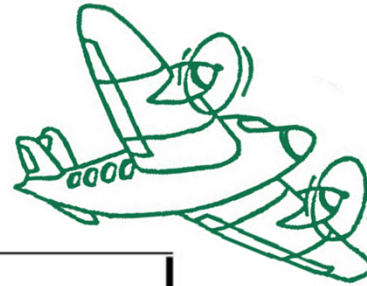




# PHOTOGRAMMETRY



# 2015 EXHIBITS



# OBSTRUCTION TABLES



**SHEET 14 - Runway 16-34 Departure Surface Obstruction Table**

Point#	Description	Top Elev. In Feet	Approach Surface Elev. In Feet	Vertical Penetration In Feet	Surface H:V	Disposition
409	COMMUNICATION TOWER	206.82	322	-115	40:1	Remains in place
410	TREE**	293.82	298	-5	40:1	2018 CIP Tree Removal Project
411	TREE*	304.17	299	5	40:1	2018 CIP Tree Removal Project
412	TREE*	309.21	299	10	40:1	2018 CIP Tree Removal Project
413	TREE**	287.34	296	-9	40:1	2018 CIP Tree Removal Project
414	TREE***	273.84	294	-20	40:1	Remains in place
415	TREE**	277.89	293	-15	40:1	Remains in place

**Notes:**

\*The highest measured object/obstruction within a group.

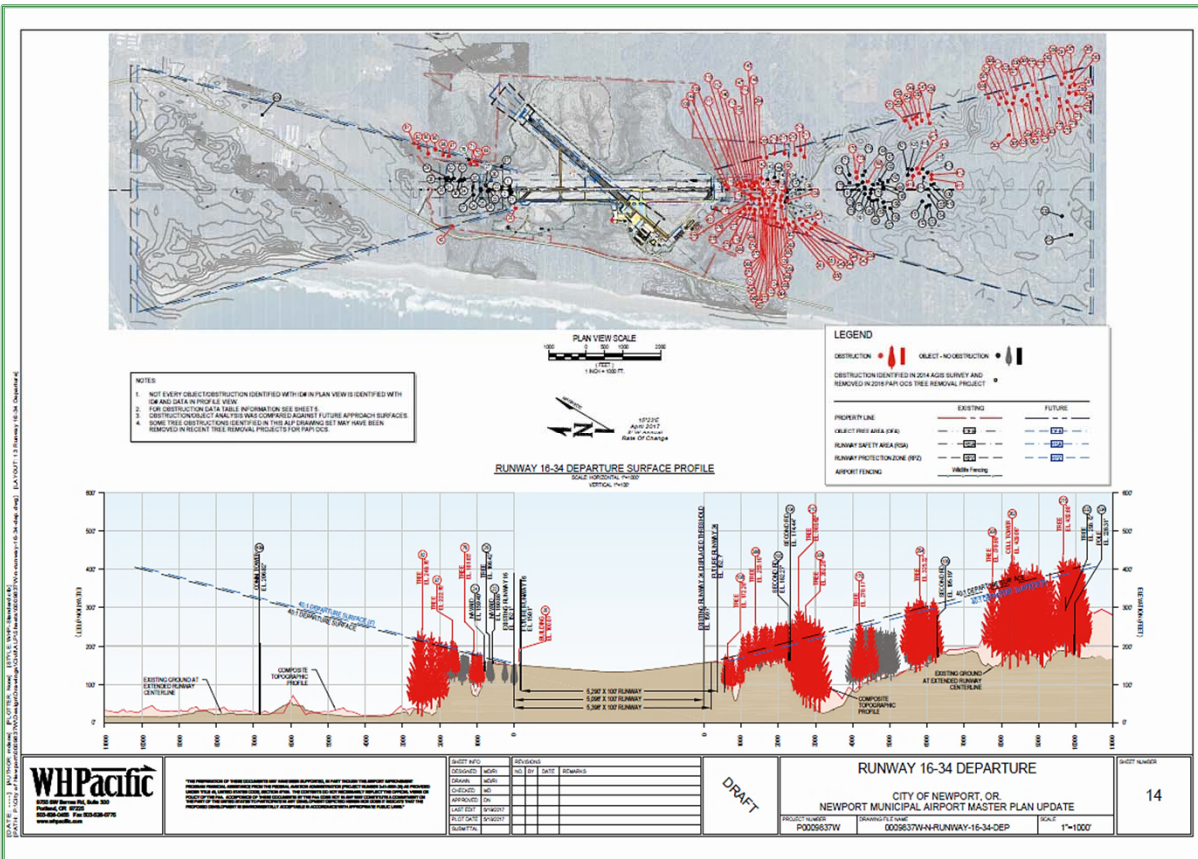
\*\* Object below surfaces at time of AGIS, which may grow and encroach on surface by logging window.

\*\*\*The project will not remove trees more than 15 feet below the imaginary surfaces as part of this project.



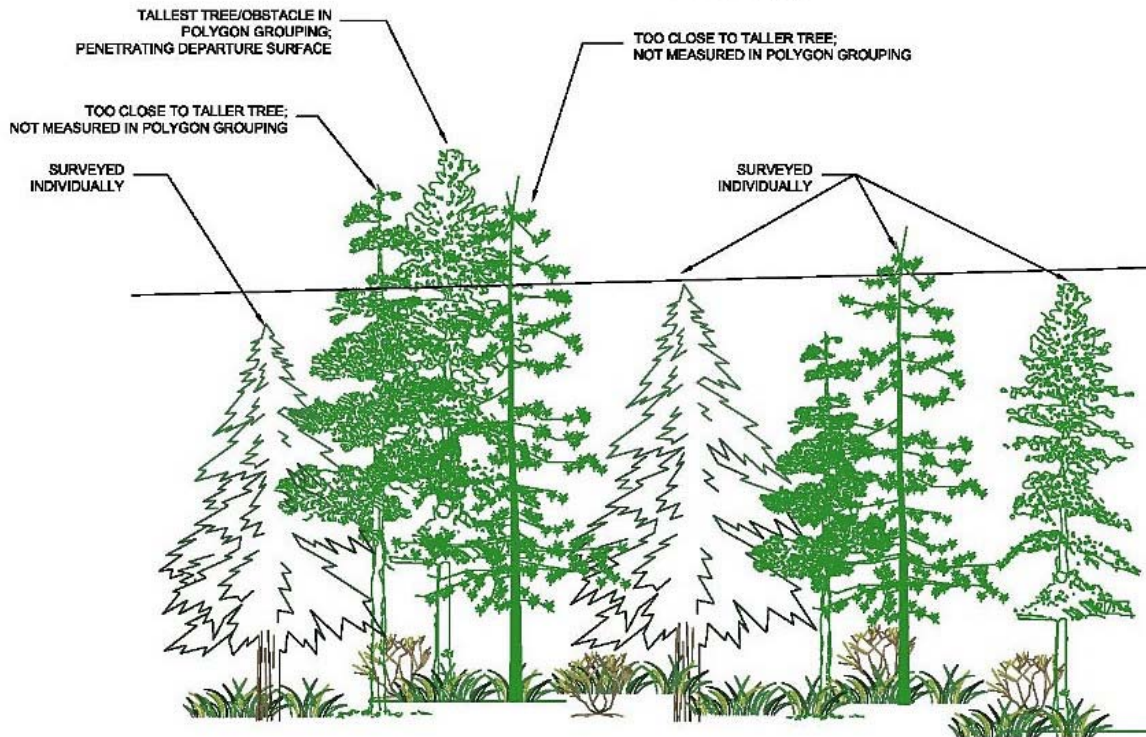


# 2017 AIRPORT MASTER PLAN



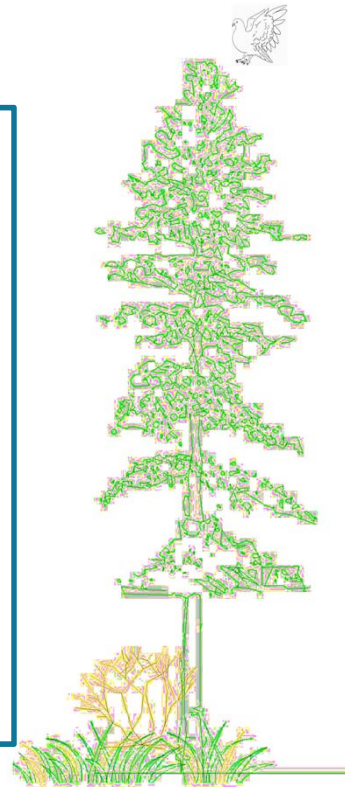


# AIRPORT GEOGRAPHICAL INFORMATION SYSTEM SURVEY



# TREE MANAGEMENT PROJECT PLAN

- ❑ Background
- ❑ Problem Statement
- ❑ Objective
- ❑ Timeline
- ❑ Methods
- ❑ Funding
- ❑ Conclusion



- ❑ FAA
- ❑ Airport  
Committee
- ❑ City Council
- ❑ County  
Commissioners
- ❑ Public Meetings

# OBJECTIVES



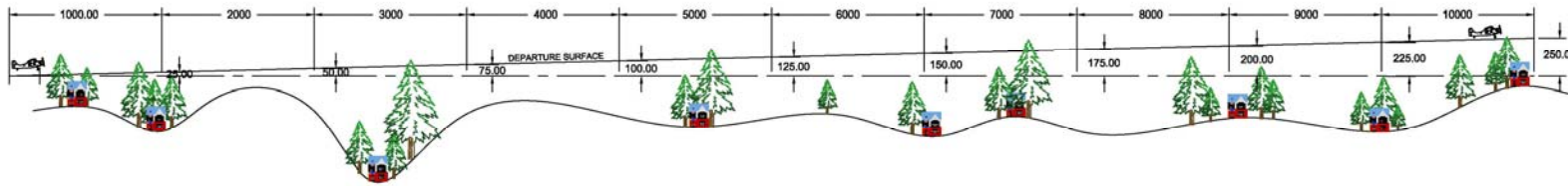
- ❖ With obstruction tables going to the FAA as part of the Airport Master Plan, the City chose to proactively develop an action plan that addresses obstructions delineated in the AGIS and Master Plan Tables before the FAA takes action to discontinue our approach and departure procedures.
- ❖ City is striving to demonstrate to the FAA that we are a conscientious Sponsor interested in maintaining the airport and resolving obstruction issues.
- ❖ City wishes to ensure pilot safety.
- ❖ City hopes to work with property owners to resolve concerns and answer questions in a discerning and timely manner.

# PROJECT TIMELINE

Action	Priority	Status	Start Date	Dependents	End Date	Notes
<b>Phase #1: Project Initiation</b>						
<b>Draft Action Plan</b>						
Abridged	High	In Process	8/1/2017		8/14/2017	For Public Outreach.
Detailed	High	In Process	8/3/2017		8/14/2017	For FAA.
Introduce Project to City Council	High	In Process	9/18/2017		9/18/2017	
Introduce Project to Airport Committee	High	In Process	9/12/2017		9/12/2017	Introduced 8-1-17.
Introduce Project to Property Owners	High	In Process	11/1/2017		11/15/2017	Initial meeting.
<b>Get FAA Involved</b>						
Copy to Daniel for Review	High	In Process	8/14/2017		8/28/2017	Preliminary Review.
Input Plan to OE/FAA-NRA Case for Clearing Review	High	Not Started	9/1/2017		11/7/2017	Upload to website for review.
FAA Environmental Review	Medium	Not Started	9/8/2017		11/30/2017	Sean & Cayla @ JPC
Discuss Funding and Timing during JPC	Medium	Not Started	10/1/2017		11/30/2017	Not yet scheduled.
Preliminary Project Scope & Cost	Medium	Not Started	11/1/2017		1/15/2018	Use for grant application.
Prepare Grant Application	Low	Not Started	4/1/2018		4/15/2018	First of two grants.
<b>Phase #2: Pre-Design</b>						
Udax Survey	High	In Process	10/1/2017		11/30/2017	Demick scheduling.
<b>Organize Public Outreach Strategies</b>						
County Commissioners	High	Not Started	10/1/2017		11/1/2017	Presentation or Abridged Plan?
Public Meetings						8-Monthly.
Individual Contacts						
Literature / Exhibits / Handouts						
<b>Pre-Design Task Order</b>						
Scope of Work	Medium	Not Started	11/1/2017		1/15/2018	
Create Topographic Maps	High	Not Started				By lot.
Create Basemap Exhibits	Medium	Not Started	11/1/2017		4/1/2020	Written easement descriptions.
Timber Cruiser	Low	Not Started	5/1/2018		5/30/2018	Assess timber value.
Property Appraisals	Low	Not Started	5/1/2018		5/30/2018	Assess Avigation value.
Environment Assessment (EA)	Medium	Not Started	1/15/2018		1/15/2020	18 - 24 Months.
Third-party Negotiator?						If needed.
FAA Review	Low	Not Started	1/15/2018		2/15/2017	30 day review.
Independent Fee Estimate	Low	Not Started	2/15/2017		3/22/2018	3 to 5 weeks.
Prepare Construction Drawings to 30%	Low	Not Started	3/26/2018		7/26/2018	Needed for EA.
FAA Review	Low	Not Started	7/30/2018		8/30/2018	30 day review.
<b>Phase #3: Easements</b>						
<b>Start Easement Negotiations</b>						
Top Trees	Medium	Not Started	1/2/2018		4/1/2020	Conduct during EA.
Remove Trees						
Condemnation of Trees						
Record Easements	Low	Not Started	4/1/2020		5/1/2017	County courthouse.
<b>Phase #4: Design</b>						
<b>Design/Construction Task Order</b>						
Scope of Work	Medium	Not Started				
Complete Drawings	Low	Not Started	1/15/2020		3/15/2020	
Create Bid Documents			3/15/2020		5/29/2020	
Third-party Negotiator?						If needed.
Service During Logging						
Close-out Reports	Low	Not Started	9/1/2020		12/1/2020	
FAA Review	Low	Not Started	2/15/2018		2/28/2018	2 weeks.
Independent Fee Estimate	Low	Not Started	2/28/2018		4/15/2019	3-5 weeks.
Apply for Design / Construction Grant	Low	Not Started	2/1/2020		4/1/2020	Second of two grants.
Go Out to Bid	Low	Not Started	6/1/2020		7/1/2020	30 Day Bid.
Oregon Procurement Information Network & Local	Low	Not Started	4/1/2020		5/1/2020	Broad base logger community. Associated Oregon Loggers Inc.
<b>Phase #5: Logging</b>						
Initiate Logging/Construction Contract	Low	Not Started	7/1/2020		7/15/2020	Contract to Council!
Logging Operation	Low	Not Started	8/1/2020		10/1/2020	60 days. Log during summer.
Potential Mill Outlet	Low	Not Started				<a href="http://www.hulloales.com/">http://www.hulloales.com/</a>
CDRW Habitat Restoration	Low	Not Started				Mitchelle Longo (541) 270-1261
Project Close Out						
FAA Reports	Low	Not Started	10/1/2020		12/1/2020	



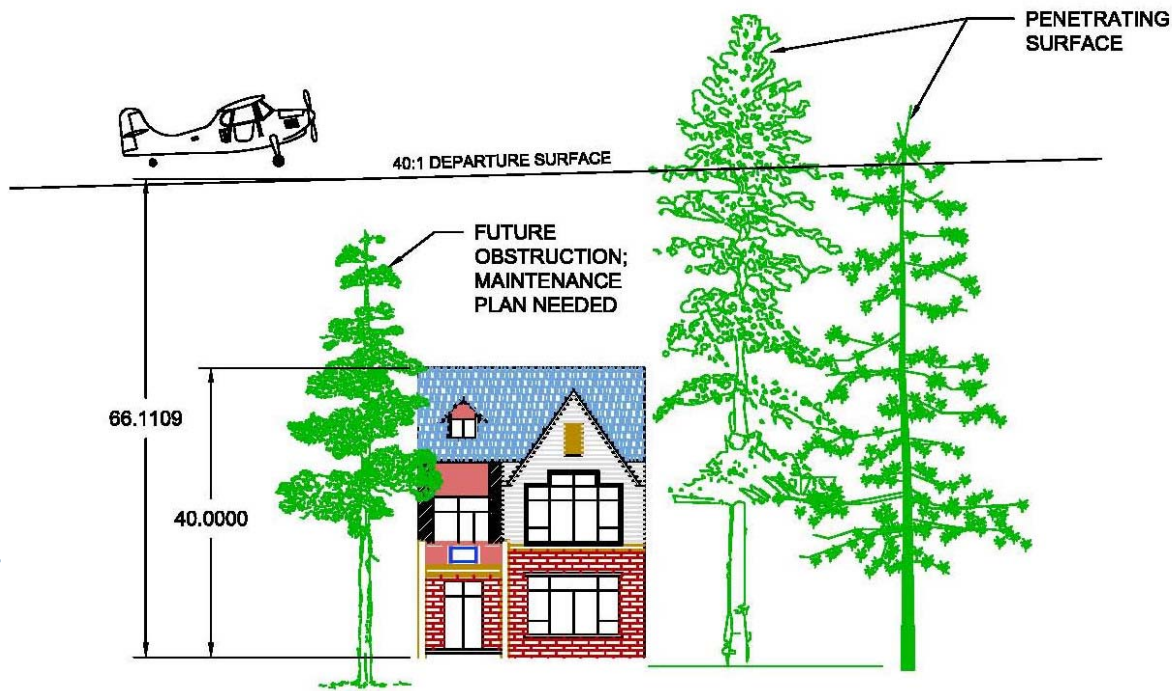
# AVIGATION EASEMENTS



- ❖ Topographic survey of the ground beneath the air space.
- ❖ Calculate surfaces over individual lots.
- ❖ Assess avigation values and market values.

# AVIGATION EASEMENTS

The City will provide each property owner with an exhibit for his or her individual lot with the easement documentation.



## WHAT HAPPENS TO THE TREES?

- ❖ The project is in the preliminary planning stages. The City does not currently have a tree removal plan.
- ❖ Whenever possible, the City will try to accommodate individual lot owner requests.
- ❖ There will be an environmental assessment, which could require 18 to 24 months.
- ❖ The project will have an arborist to assess removal options per species for the health of the remaining trees.
- ❖ When possible, the City would like to see the trees used for habitat restoration (i.e. fish habitat).



# 2018 TREE REMOVAL

QUESTIONS